



CODE:SE20061C0

INSTALLATION
INSTRUCTIONS

IMPORTANT: please read these instructions before commencing installation and retain for future reference.

Components

Tools required



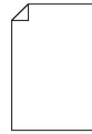
1× light



installation
accessory



2× Screws



1× Fitting Instructions



Pz1 Screw Bit



10mm Screw Bit



Power Drill

Important safety information

Please read these instructions carefully before attempting to install this product. It is advisable to keep these instructions in a safe place for further reference.

We recommend that you consult a qualified electrician. All electrical installations must be carried out in accordance with current IEE wiring regulations (BS7671).

These products must not be modified, if any modifications are made, it may invalidate the warranty and may render the product unsafe. These LED lights operate low voltage (24V).

Do not wire the individual LED light fittings directly to the mains. This product is for indoor use only. Keep out of moisture and use only in dry rooms.

- If in doubt installation must be carried out by a qualified electrician.
- Install on smooth flat surface(s) only.

Safety instructions

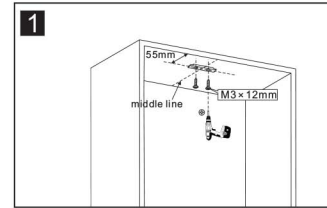
1. Before commencing installation or maintenance, isolate the main electrical supply for the appropriate circuit at the fuse board.
2. This product requires a 24V LED driver.
3. The light should be mounted onto a secure surface.
4. Position lights where they will not be exposed to steam or splashes etc.
5. Suitable for furniture lighting.
6. When the lamp expires the fitting must be replaced.
7. Class III safety extra low voltage (SELV).

Waste Electrical & Electronic Equipment (WEEE)
The Symbol on the product, or on the document accompanying the product, the crossed out wheeled bin symbol, indicated that this product may not be treated as household waste. Instead it shall be handed over to the applicable collection point for the recycling of electrical and electronic waste.

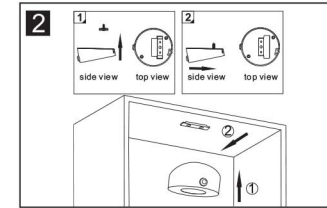


RoHS Compliant ✓ CE

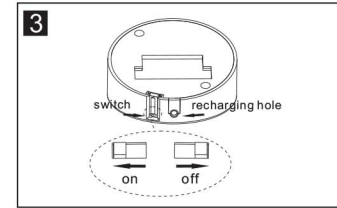
Installation



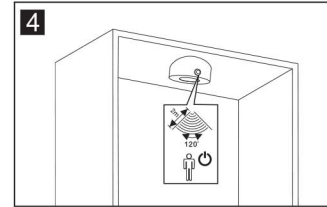
Install the bracket.



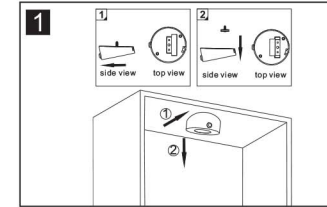
Slide the light onto bracket.



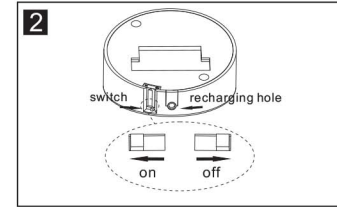
Turn on the switch.



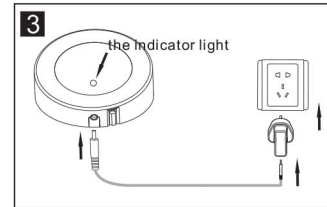
Sensor detection range & detection angle when installed.



Recharging chart: Take down the light.

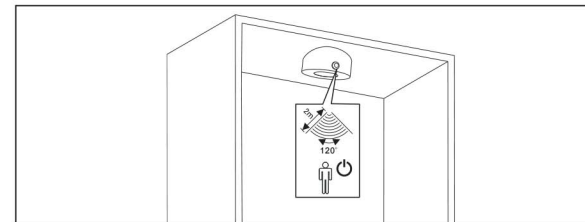


Turn off the switch.



Connect the USB cable to the charger and light. When charging, the indicator light, will be red; when finished charging, it will be green. Charging time: 6 hours, continuous working time: 9.5 hours.

Operation



The Solus Rechargeable Wardrobe Light has a built-in PIR sensor. When the wardrobe door is opened this switch will detect motion from a distance of 2m and the light will switch on. Recharge the unit using the SE2007000 pluggable USB charger.

Maintenance & Care

- Ensure that the power is disconnected prior to cleaning.
- To keep the finish of this product, wipe over with soft cloth periodically.
- Do not use harsh chemical solvents, it may dis-colour or damage the finish.

Sensio House, Unit 6, Lister Park, Green Lane, Featherstone, Pontefract, WF7 6FE
www.sensio.co.uk

Technical drawings for illustration purposes only. Sensio has the right to change any information without prior notice. Make sure you check all hole cut outs before work commences.