

Important notice

The key to long term performance of any floor is the quality of the sub floor preparations conducted, the installation procedure being correct and the immediate and ongoing care and maintenance procedures used on the floor.

To help ensure the installation is carried out correctly, please make sure this instruction leaflet is **fully read and adhered to by you / your floor installer**. Ideally the installer should be appropriately trained in LVT flooring installation and be suitably competent to carry out the pre installation sub floor procedures and installation.

Suitability:

ProClick LVT floors are suitable for most domestic internal rooms and light commercial rooms such as small to medium sized shops & offices. If any doubts exist, in terms of suitability, as to your intended residential or commercial installation clarify your intended use / installation with your supplier prior to the installation commencing as it is the installers responsibility to ensure the product is suitable for the end use rooms/areas.

This product is **not suitable and not recommended** for use in conservatories or sun rooms as extreme variations in temperature can occur which may affect the stability of the product.

ProClick LVT flooring is also **not suitable and not recommended** for use over any form of **radiant heat under floor heating system (UFH)**.

Installer / Owner Responsibilities:

The intended installation room/area should have a consistent temperature of 18 – 22 Deg C and stable environment prior to, during, and following installation during ongoing use.

It is the installer's responsibility to carry out the final inspection of the panels / flooring to ensure the colour, quality, and factory finish of the product is acceptable and that **no visual defects are present to any of the boards / tiles before they are installed**. The installation of any boards / tiles with clear or obvious visual defects or blemishes will invalidate the product warranty and is not grounds for complaint.

Upon receipt of the packs check the batch numbers on the end of them to ensure they batch numbers all match and that no delivery damage is present. If any issues are found report and discuss them with your LVT supplier before opening and installing them.

Carefully examine the flooring for colour, finish, damages and quality before installing it. The installer must use reasonable selectivity and select out, or cut off pieces, with deficiencies, whatever the cause. If the product overall is deemed not acceptable for any reason, do not install it and contact your supplier immediately.

Prior to installation of any flooring product, **the installer** must determine that the job site environment and the sub floor surfaces involved meet, or exceed, the recommendations and instructions contained within this leaflet and all applicable industry European and British standards.

Recommendations regarding the construction of the materials used as well as local codes must be followed. These instructions recommend that the construction and sub floor be suitably dry ,stiff, of suitable load bearing strength and

flat, (as per B.S. 8201: 2011 & B.S. 8204-1: 2003),

The manufacturer and distributor declines any responsibility for job failure resulting from, or associated with, sub-surfaces, sub flooring or job-site environmental deficiencies, incorrect storage of the product, lack of or incorrect sub floor preparations and installation errors.

It is important that the installer checks each board / tile for any type of defect. Any minor defects or objectionable elements within individual boards / tiles should be dealt with by trimming and or cutting of the panels as is normal good installation practice accommodated for by the wastage factor tolerance added to the job quantity.

1 - Pre installation Procedures & Checks.

- Calculate the total square meters or square footage of the room(s) and add a minimum of 5% for cutting and waste.

- The packs of flooring should be placed in the room in which they are to be fitted **for a minimum of 48 hours** and should be carefully stacked on **SUITABLE LEVEL BEARERS WITH THE PACKAGING LEFT UNOPENED.** **DO NOT STACK THE PACKS ANY MORE THAN 6 HIGH.**

The packs should be stored and laid in a stable, heated, room environment with a room temperature of between 18°C and 22°C.

As vinyl is a material that is temperature sensitive the packs **must not be stored** outside or in unheated garages, sheds or outbuildings or be stored directly behind glass doors in direct sunlight or be subjected to any direct heat source such as radiators & fires as distortion of the packs and boards may occur particularly if the packs are not stored flat or are on uneven height bearers.

- All substrates must be solid, structurally sound, suitably dry, clean and particle / debris free. As LVT is a relatively thin product **the sub floor surface must suitably flat - i.e less than 2mm from flat per 2 lin mt.** Carry out any remedial works necessary to ensure the sub floor is within the stated tolerance for flatness before installing this product.

Concrete sub floors must have a moisture content by volume of below 3% and or a relative humidity of less than 65% when checked with a hygrometer in accordance with B.S. 8201: 2011 & B.S. 8204-1: 2003.

Wood or wood based sub floors must not have a moisture content in excess of 12%.

The sub floor surface should be free of all contaminants and loose material and must be appropriately flat dry and sound. If any doubts exist as to the suitability of your sub floor have it checked, and repaired if necessary, by an appropriate professional.

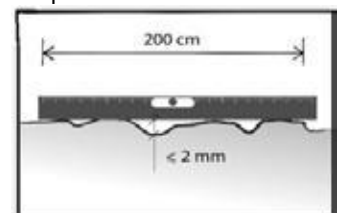
- Where possible the boards / tiles should be installed lengthways towards the main incoming light source and, where possible, down the length of the room parallel to the longest wall.

If installing onto a new or existing concrete or screed base

- If a new concrete sub floor has been installed checks must be made in accordance with B.S. 8201: 2011 & B.S. 8204-1: 2003 to ensure the moisture content and humidity of the slab is appropriate in line with the above industry standards.

New and existing sub floor surfaces **must be solid, sound and flat** to less than 2mm variance per 2 linear meter run of sub floor as per B.S.8204-1:2003.

NOTE ! – an uneven sub floor surface can result in panels / tiles flexing excessively which can result in joint failures, floor movement, excessive wear to high spots and noises occurring. Telegraphing of sub floor undulations, rough spots or high points can also occur all of which resulting issues are not covered by the product warranty.



If installing onto a wooden sub floor

ProClick flooring can be installed directly over **prepared floorboards** which have been over laid with plywood sheets (minimum 6mm thickness) and screwed down in accordance with BS 8201: 2011, allowing a minimum 6mm perimeter gap for expansion.

Please note: Where screws are being used to secure an overlay, check for the existence of any pipes or electric cables etc under the existing sub floor and take appropriate not to damage or pierce any pipes or electrical cables beneath.

Ensure the ply sub surface is sound and appropriately flat, less than 2mm deviation over a 2 meter run as shown above.

Chipboard or ply paneled sub floors that are appropriately sound, dry and flat are suitable.

If the existing wooden sub floor is not suitably sound and any areas deflect or bounce underfoot then the sub floor must be made stable and sound before the LVT flooring is installed.

2 - Installation Method

Your ProClick LVT flooring should be installed as a “floating” floor in that the boards / tiles should be located together using their click profile edges and laid dry directly over your checked and prepared sub floor.

Your LVT flooring **does not require** any form of soft underlay material beneath it and should be laid directly onto your flat, and prepared as necessary, solid sub floor surface.

Any loose, soft or unsound existing floor coverings, e.g. lino, carpet etc, should be removed prior to installation of your new wood floor and the existing sub floor be checked and prepared as necessary to ensure it is appropriately flat, dry and sound as per the instructions above and relevant industry sub floor standards.

It is very important that the installation carried out is as per the following instructions **as the warranty offered with this product is only valid if the installation instructions have been correctly followed.**

Floating Floor installation

Minimum Tools required (not supplied) :-

Utility knife	Square edge
Jigsaw or Hand saw	Pencil
Tape measure	Chalk Line
6mm Spacers	Gloves & Goggles for cutting boards.

Key installation points.

Before installation of the flooring begins ensure all necessary sub floor checks, remedial work actions and preparations have been completed.

Your flooring has click locking edge profiles and is made to be installed as a floating floor **without using adhesive** on the board joints.

Leave an open **expansion / movement gap of 6mm (¼”)** around **the whole perimeter edge of the flooring**, (use 6mm (¼”) distance wedges or spacers), and around any pipes, stairs, columns, doorframes, doorway thresholds and where the flooring meets any fixed object.

Where the flooring run exceeds **10 linear meters in width or length** insert in an “in floor” 6mm (¼”) expansion / movement gap by using an appropriate “T” mould section profile.

LVT flooring expands and contracts slightly when temperatures increase or decrease so the stated expansion / movement gap must be left at all edges, including cut outs around fixed objects, of the flooring so **do not install any boards tight** to any construction part of the building or adjoining floors.

Separate your LVT flooring between adjoining rooms at door thresholds using an appropriate T moulding profile as this ensures that the flooring in each room can move independently of its neighboring floor.

The installer must open and **mix /select boards / tiles from several packs at a time** during installation to ensure a good mix of boards / tiles and overall colour blend is achieved.

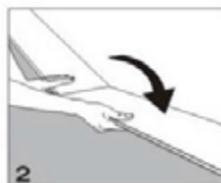
Installation of the boards / tiles.

Measure the width of the room to be fitted and divide the size by the width of the board / tile to be installed, From this calculate the width of the final row of boards and if the width of this row is less than 50mm cut the width of the first row of panels / tiles to an appropriate width size so as to ensure the width of the final row of boards exceeds 50mm and is visually comparable to the first row.



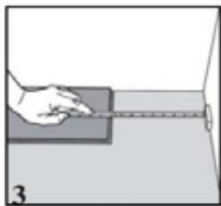
First Plank, First Row.

Begin laying the floor in the left hand corner. Place a 1/4" spacer against the left wall and position the plank against the spacer with the groove side exposed. We will concern ourselves with the distance to the front wall later.

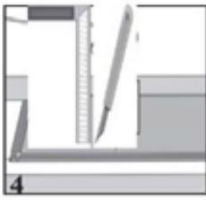


Second Plank, First Row.

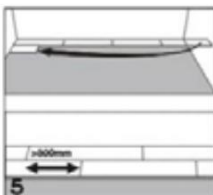
Press the next plank at an angle so the short side tongue aligns with the short side groove of the first plank. Then lay down. Continue the first row like this.



At the end of the first row, put a 1/4" spacer against the wall and measure to get the length needed for the last plank.



To cut, align an L square squarely to the board at the mark where you would like to cut. Run a utility knife along the edge of the L square to "score" the plank where you marked it. Then simply bend to "snap" along the score line. Run knife along fold line to separate into 2 pieces.



Second Row.

Use the remaining part of the first row's last plank as the first plank of the second row if it is at least 11". If it's not, cut a plank in half and use it instead. Always ensure that the end joints are staggered at least 11" long.



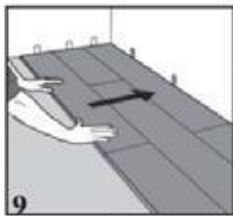
Place the plank at an angle against the plank in the first row, press forward and fold down at the same time. Leave the plank in a somewhat up angled position where the planks start to lock. To make this easier, a wedge with the suitable width can be placed under the plank near the short side.



Second Plank, Second Row.
Place the short end of the plank at an angle against the previous installed plank and fold down.



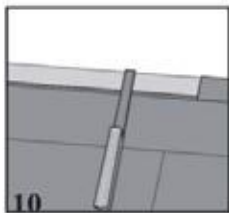
Lift plank together with the previous laid in the same row up a little over an inch and push it against the row in front. Put it down when the planks are tightly together. Continue this for three rows.



Adjust the distance to the walls when three rows are completed. Using spacers, place the flooring 1/4" from the walls. Keep the spacers in the entire installation and remove when complete.

Continue installing the boards in this manner until the final row is reached.

Final Row. – Cut the boards to width.



If the wall is uneven, the planks must be adapted to its contours. Mark the planks with the contour of the wall. Do not forget to leave a 1/4" space to the wall. This procedure can also be used for the first row if necessary.

Locate the final row boards together as previous and carefully use a heel iron if necessary to lock the edges together.

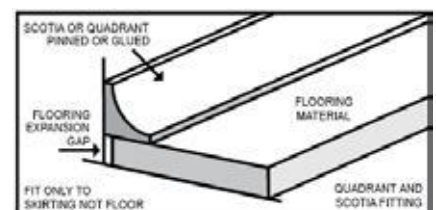
Cutting around pipes and obstructions in the floor.

Ensure any fixed objects and radiator pipes etc within the floor are cut around appropriately leaving the 6mm (1/4") expansion / movement gap around the fixed object

Completing the installation

Once the flooring is installed remove all expansion spacers and cover the expansion gaps by either re-fitting the skirting boards or alternatively, attaching a suitable bead or scotia trim **to the skirting** using glue or panel pins.

At doorways an appropriate "T" moulding threshold strip should be used to



separate adjoining LVT or other floor coverings in other rooms, provide the required 6mm expansion / movement gap and to protect the edges of the floor. The T moulding **must not** be fixed to the flooring itself but should be fixed to the sub floor.

CARE AND MAINTENANCE

Please leave these instructions with the owner of the floor.

Correct care and maintenance of your ProClick LVT floor will help ensure your floor always looks its best and will aid its long term reliability and performance.

Following installation and for routine care and maintenance please follow these simple instructions:

Immediately following installation & Ongoing care & maintenance

- Thoroughly clean your ProClick LVT floor by using “**Bona Tile & Laminate Floor Cleaner**” which is a hard surface cleaner also suitable for vinyl floor coverings.
- Vacuum or sweep the floor weekly, or more frequently if required. The vacuum head must be brush or soft felt. Do not use a vacuum that has beater bars or a hard metal head.
- A floor swivel head flat mop with replaceable cloth cover is highly recommended to eliminate finer particles of dirt and grit that may build up on the floor.
- Spillages and tracked in dirt should be wiped off the floor immediately.

Do not use general purpose cleaners, abrasive cleaners or cleaners containing bleach or oils.

The recommended Bona cleaner should be available through your flooring supplier.

Things to “do” and be aware of:

- **DO** - Make use of door mats at all external entrances and over high traffic areas of the floor as this will significantly help to avoid dirt and grit being walked on to the floor.
- **DO** - Clean the floor with the recommended cleaning products as they are designed to clean your floor effectively and not damage it in any way.
- **DO** - Use furniture protection pads under all furniture legs and feet as this will avoid damage being caused by the movement of furniture across the floor. Use mats at desks, under chairs and in front of any furniture or units where footfall is continual in a small specific area such as in front of sinks and cookers. This will avoid damage and excessive or accelerated wear from castors, chair feet and specific continual footfall in these areas.
- **DO** - Protect your floor from constant direct & intense sunlight where possible, particularly immediately behind glass doors, as areas subjected to constant sunlight may discolour at an accelerated rate compared to shaded areas of the floor and board / tile movement may occur.

Very important “dont’s” and things to avoid:

- **DON’T** - Walk on the floor in narrow hard, or stiletto type, heels as this may damage the surface of the flooring.
- **DON’T** - Slide heavy furniture or objects across the floor as this may also damage the surface.
- **DON’T** - Use ammonia based cleaners, acrylic finishes, wax based products, general detergents, bleaches, polishes, abrasive soaps or cleaners, or any acidic based cleaners. These type of cleaners can fade, etch or pit the surface of your flooring.
- **AVOID** - Letting pets with claws run across the flooring and always keep pets claws trimmed as animal claws may scratch the surface of the floor.

Warranty Information

Your ProClick LVT flooring comes with a 15 year limited residential use, and 8 year light commercial use, warranty against manufacturing defect.

To maintain the validity of your ProClick warranty your ProClick floor must be installed, cleaned and maintained in accordance with the published installation, care and maintenance details.

Please note that any longer term renovation of your floor involving repairing will render the original warranty invalid.

A copy of the LVT limited manufacturing defect warranty is available upon request from your LVT supplier.

This warranty is subject to English law and to the exclusive jurisdiction of the English Courts.

What to do if you have any problems.

If there is a problem with your ProClick flooring, prior to contacting ProClick Tuscan you must have attempted to contact your supplier and/or installer to report the issue with your product and have requested an initial inspection of the products by your supplier and/or installer. Following this, but within 28 days from the date that the defect arose or became apparent, if it is believed that a manufacturing defect is the cause of the problem with the product, you should contact ProClick Tuscan via the ProClick LVT website - proclickvinylflooring.co.uk. It is likely that the supplier/installer/distributor will wish to inspect the product and the purchaser must allow reasonable access to the product in order for such inspection to take place.

It is strongly recommended that proof of purchase and any associated documentation, (for example, written documentation confirming the sub floor preparations and checks made prior to installation of the Product), are kept in a safe place as proof of purchase and any associated documents will be requested before any investigation takes place.

Disclaimer:

We reserve the right to make amendments to these instructions without prior notification.

E&OE.