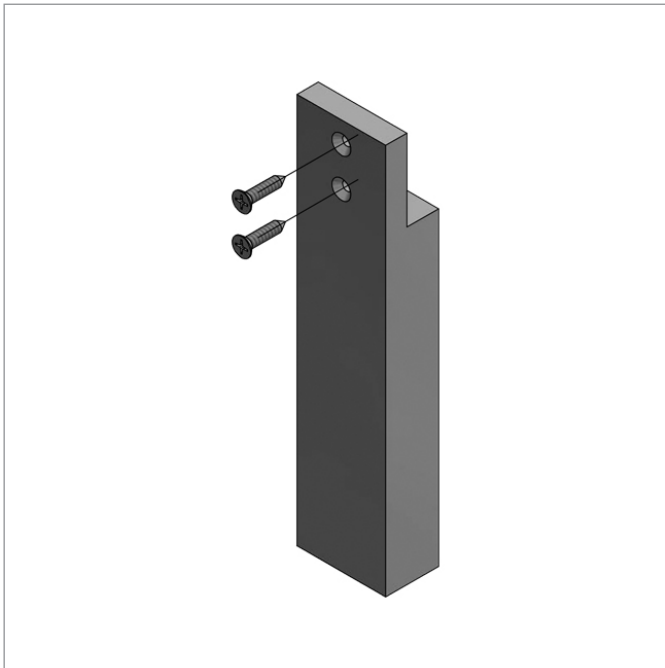


Set of 2 Waterfront cabinet legs

41800031675



DIMENSIONS:

Length: 221mm

Width: 50mm

IMPORTANT:

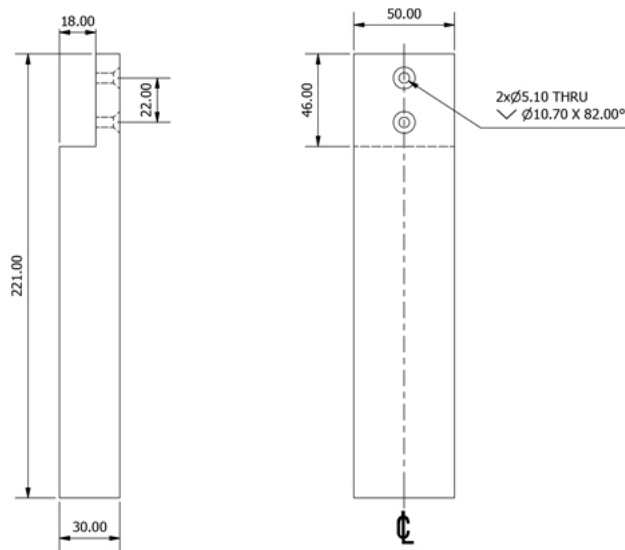
Always read the installation, operating and maintenance instructions.

- Due to manufacturing tolerances we do not recommend pre-drilling fixing holes before physically receiving this product.
- A thorough check must be carried out on receiving delivery of this product and report any defects immediately.
- Opening the packaging without due care and attention could result in damage to the product or injury to yourself or others.
- This product must be stored in a dry place, the right way up and not stacked under other equipment on site.
- Please ensure that the legs are safely attached before use.
- Installation must be carried out by a qualified tradesman using suitable fixings for the wall substrate.
- Improper installation / use can cause accidents and injuries.
- Beware after installation a functional test must be carried out prior to use
- These instructions should be retained by the user of the product for its whole life time.
- Do not use the product for any purpose other than that for which it was designed.
- Do not use the product if damaged / not securely fixed as this may cause injury.
- Keep plastic bag packaging away from children.
- The product should not be subjected to impact or downward force.
- To maintain the integrity and functionality of this product, regular cleaning and inspection is necessary.
- If in doubt, carry out your own risk assessment for each installation.

CARE AND MAINTENANCE:

To maintain the appearance of this product, ensure that it is regularly cleaned only using a clean, soft damp cloth. A solution of warm water and a mild liquid detergent may be used where necessary, and then the fitting rinsed thoroughly and wiped dry. Any other cleaning action or cleaning products will invalidate your warranty.

Abrasive cleaners, scouring cleaners, limescale cleaners and acidic cleaners must not be used under any circumstances. Avoid contact with all solvents (including chlorinated solvents, ketones or acetones as these may result in surface deterioration or etching). Also avoid contact with any harsh household chemicals such as bleach cleaners, drain cleaners, rust removers, paint strippers and toilet bowl cleaners, toothpaste, mouthwash, bar keepers friend or Brasso.

**Installation:**

Installation should be carried out by a suitably qualified tradesman using correct fixings for the wall substrate. Fixings are supplied with this product to allow the correct fixing method to be selected per installation. Consult Bathstore for any queries with the fixings.

1. Ensure all fixings are safe for use before installation
2. Offer the product up to the cabinet at the position required
3. Screw the product to the cabinet in the required position ensuring it is secure.
4. Ensure product is safe.
5. Always carry out a functional test after installation and report any issues immediately.
6. Please leave these instructions with the user.