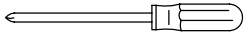


# SAVOY TOWEL RAIL INSTALLATION INSTRUCTIONS

 41800037780  
 41800037790  
 41800038190  
 41800038230  
 41800038240

**TOOLS REQUIRED:**

**PARTS SUPPLIED:**


2x



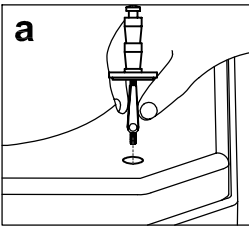
1x



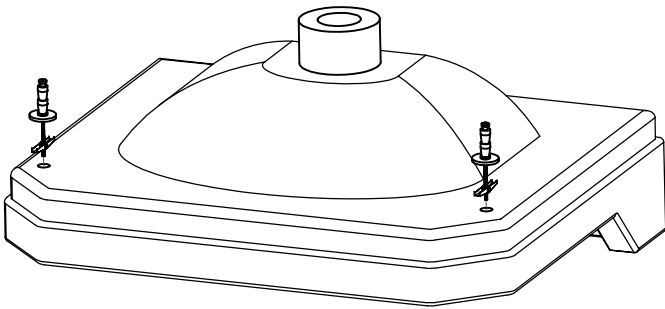
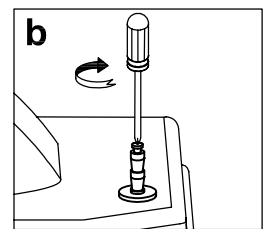
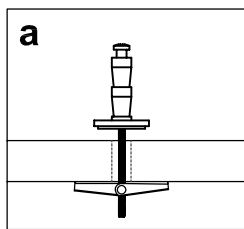
4x



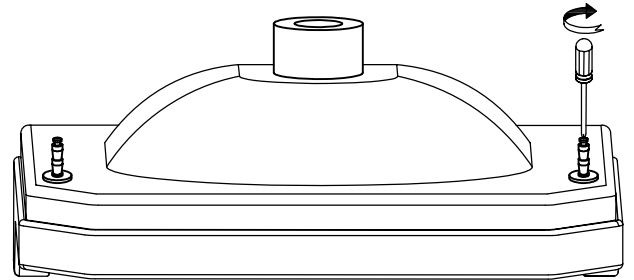
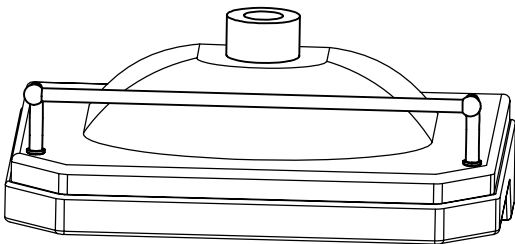
1x

**1**


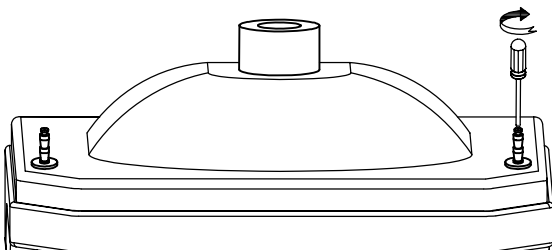
- Insert the towel rail fixing bolt into each of the fixing holes located underneath the basin.


**2**


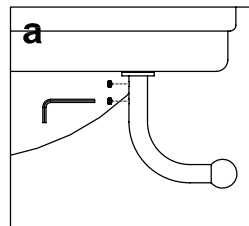
- Pull the fixing bolt up so that it catches on the inner surface of the basin, and then tighten, but only tight enough to prevent the fitting sliding too much.


**3**


- Offer up the rail and push fully home to the plate - this then centers the fitting in the basin.



- Pull the rail off the connectors, without moving the fittings, and fully tighten the connectors to the basin.

**4**


- Refit the rail to the connectors and lock in position with the 4 grub screws.

