

PARTS LIST	
BASIN	x 1
RUBBER PAD	x 4

Figure 1



Figure 2

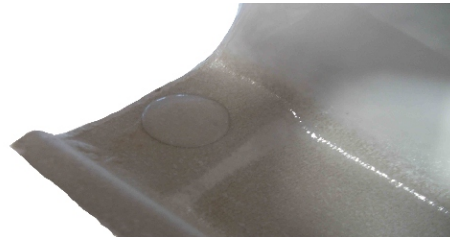


Figure 3

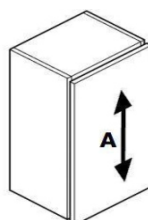
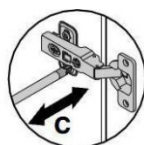
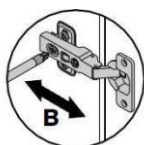
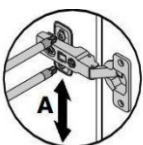


To ensure that your Match basin sits firmly on its vanity unit we have provided some rubber pads that can be used as spacers.

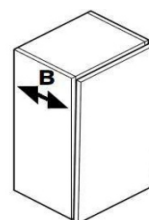
- Place the basin on the vanity unit
- If the basin rocks fix one of the pads to the basin as shown in figures 2 and 3
- Replace the basin and test again. If there is still movement place a pad on the corner diagonally opposite the first pad
- Replace the basin and test again. We have provided 4 pads so this process can be repeated if necessary.

Due to motion in transit, the cabinet doors and drawers may need to be adjusted after installation

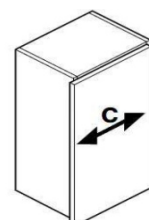
Hinge Adjustment



A- Vertical
Loosen screw 'A' on all hinges. Adjust door and retighten screw.



B- Lateral
Loosen screw 'B'. Adjust door and retighten screw.



C- Horizontal
Loosen screw 'B' 1/2 turn. Turn screw 'C' until door is positioned correctly and retighten screw 'B'.

For technical support please call 08000 232323.

Care and maintenance

Please leave with the householder

This furniture is made of wood, and has a water resistant finish. It should not be left wet, and the quality of the finish is best maintained if it is wiped with a dry cloth after use. It should only be cleaned using a soft damp cloth followed by a dry cloth. Do not use bleach or any abrasive cleaner.