

PARTS LIST	
BASIN	x 1
RUBBER PAD	x 4

Figure 1



Figure 2

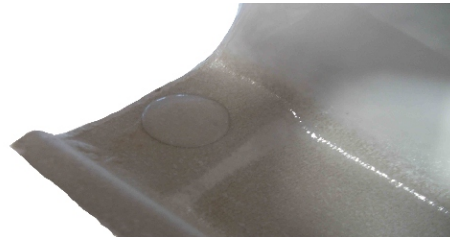


Figure 3

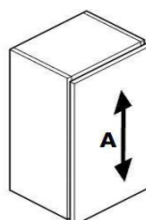
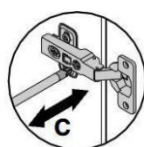
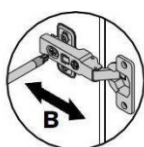


To ensure that your Match basin sits firmly on its vanity unit we have provided some rubber pads that can be used as spacers.

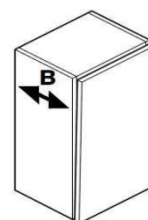
- Place the basin on the vanity unit
- If the basin rocks fix one of the pads to the basin as shown in figures 2 and 3
- Replace the basin and test again. If there is still movement place a pad on the corner diagonally opposite the first pad
- Replace the basin and test again. We have provided 4 pads so this process can be repeated if necessary.

Due to motion in transit, the cabinet doors and drawers may need to be adjusted after installation

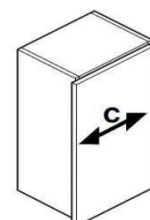
Hinge Adjustment



A- Vertical
Loosen screw 'A' on all hinges. Adjust door and retighten screw.



B- Lateral
Loosen screw 'B'. Adjust door and retighten screw.



C- Horizontal
Loosen screw 'B' ½ turn. Turn screw 'C' until door is positioned correctly and retighten screw 'B'.

For technical support please call 08000 232323.