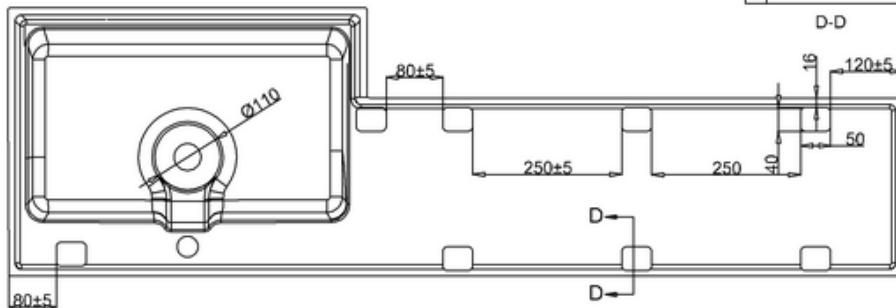
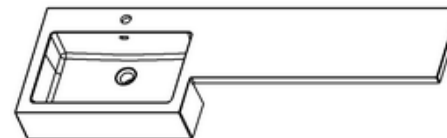
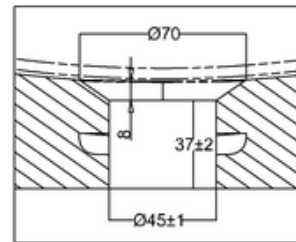
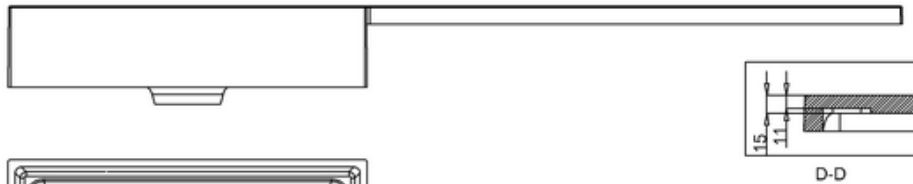
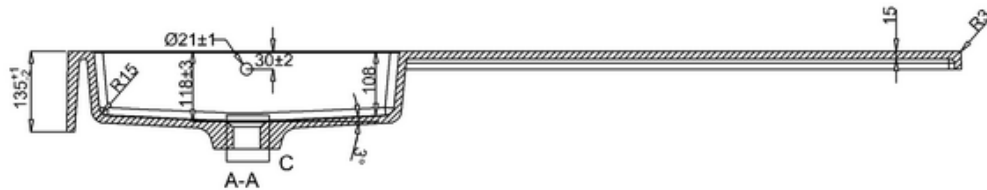
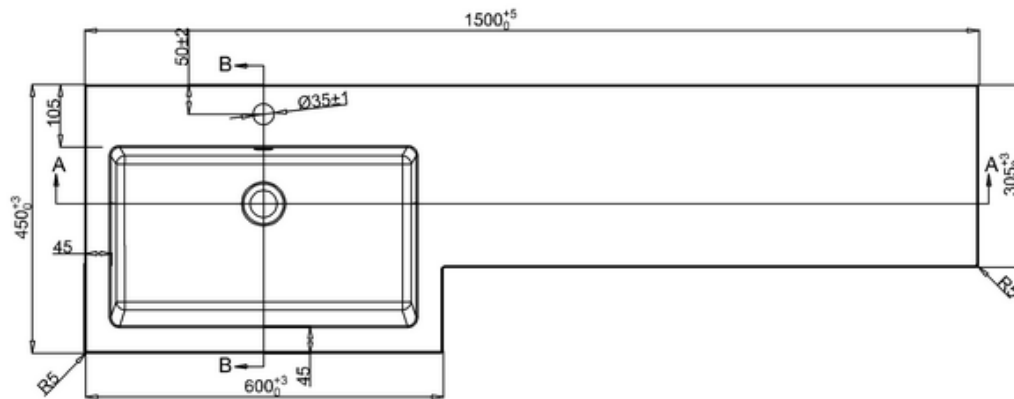




**bathstore**

# 41405011510 - MyPlan 1500 POLYMARBLE 1TH BASIN LEFT HAND INTERATED TOP W1500 D450



The flatness tolerance should be within 3mm

- Remark:
- 1: Flatness of installation surface: 0~2mm
  - 2: Flatness of whole surface: 0~5mm
  - 3: Flatness of main surface: 0~5mm
  - 4: Flatness of side surface: 0~4mm
  - 5: Distance from tap hole to edge of bowl: Max.80mm
  - 6: Dim from basin back to center tap hole: Min.55mm
  - 7: Distance between tap hole to drain hole: Max.170mm
  - 8: Depth from tap platform to drain hole: Max.250mm